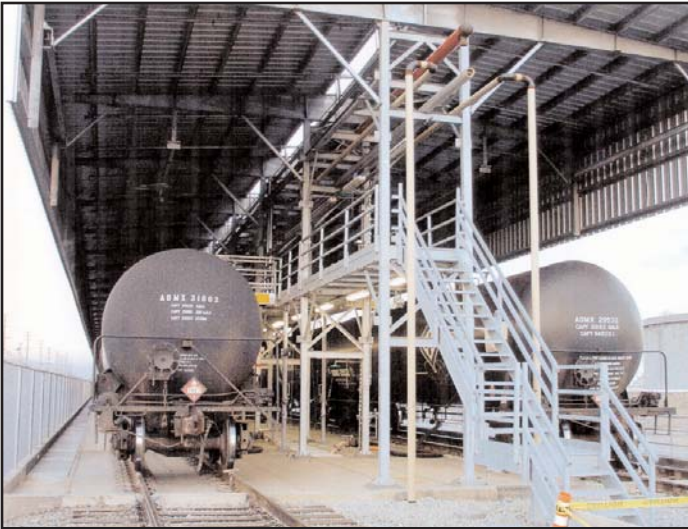




Lomita Rail Terminal Ethanol Unloading Facility

Carson City, California



The Lomita Rail Terminal is specifically designed to deliver clean-burning ethanol to the Los Angeles market. With the capacity to unload a 95-car train in 24 hours, the terminal delivers alternative and environmentally-friendly fuel whenever needed. As a naturally occurring and environmentally-safe metal, zinc is a fitting partner in this state-of-the-art facility.

“Reliable” and “maintenance-free” were the buzzwords associated with this project and used often by Goldline, which specifies hot-dip galvanized steel on all of its projects. Over 200 tons of galvanized tubular column frames, platform bridges, grating, ladders, stairs, and canopy rafters were used on the 1,000-foot-long facility. Canopy rafters were designed with splices at the apex in order to avoid progressive dipping.

Located in a harsh industrial environment of corrosive chemical emissions, mist, and fumes from refineries and train exhaust, the facility was designed for around-the-clock operations. Hot-dip galvanizing was the only corrosion protection system that could guarantee continuous operation without maintenance interruptions. It was also chosen for its durability and hard coating to protect the steel from scrapes and dents caused by the unloading equipment.

Hot-dip galvanizing will not only offer outstanding performance, but was initially cost-competitive with other proposed coatings as well, making the Lomita Rail Terminal project reliable, maintenance-free, and economical.

